



# Beaufort County Public Works *Stormwater Infrastructure* Project Summary

**Project Summary:** Scott Hill Road Outfall - Shinn Cutting

**Narrative Description of Project:**

Project improved 3,115 L.F. of drainage system. Shinn cut 3,115 L.F. of outfall ditch.

**Completion:** May-12

| 2012-315 /Scott Hill Road Outfall         | Labor<br>Hours | Labor<br>Cost     | Equipment<br>Cost | Material<br>Cost | Contractor<br>Cost | Indirect<br>Labor | Total Cost        |
|---|----------------|-------------------|-------------------|------------------|--------------------|-------------------|-------------------|
| AUDIT / Audit Project                     | 1.0            | \$20.48           | \$0.00            | \$0.00           | \$0.00             | \$0.00            | \$20.48           |
| HAUL / Hauling                            | 8.0            | \$196.59          | \$124.27          | \$57.92          | \$0.00             | \$0.00            | \$378.78          |
| ODSHN / Outfall ditch - Shinn cut         | 106.0          | \$2,471.45        | \$999.84          | \$658.71         | \$0.00             | \$0.00            | \$4,130.00        |
| Indirect Labor, Services and Supplies     | 0.0            | \$0.00            | \$0.00            | \$0.00           | \$0.00             | \$1,896.47        | \$1,896.47        |
| <b>2012-315 / Scott Hill Road Outfall</b> | <b>115.0</b>   | <b>\$2,688.52</b> | <b>\$1,124.11</b> | <b>\$716.63</b>  | <b>\$0.00</b>      | <b>\$1,896.47</b> | <b>\$6,425.73</b> |
| <b>Sub Total</b>                          |                |                   |                   |                  |                    |                   |                   |
| <br>                                      |                |                   |                   |                  |                    |                   |                   |
| <b>Grand Total</b>                        | <b>115.0</b>   | <b>\$2,688.52</b> | <b>\$1,124.11</b> | <b>\$716.63</b>  | <b>\$0.00</b>      | <b>\$1,896.47</b> | <b>\$6,425.73</b> |

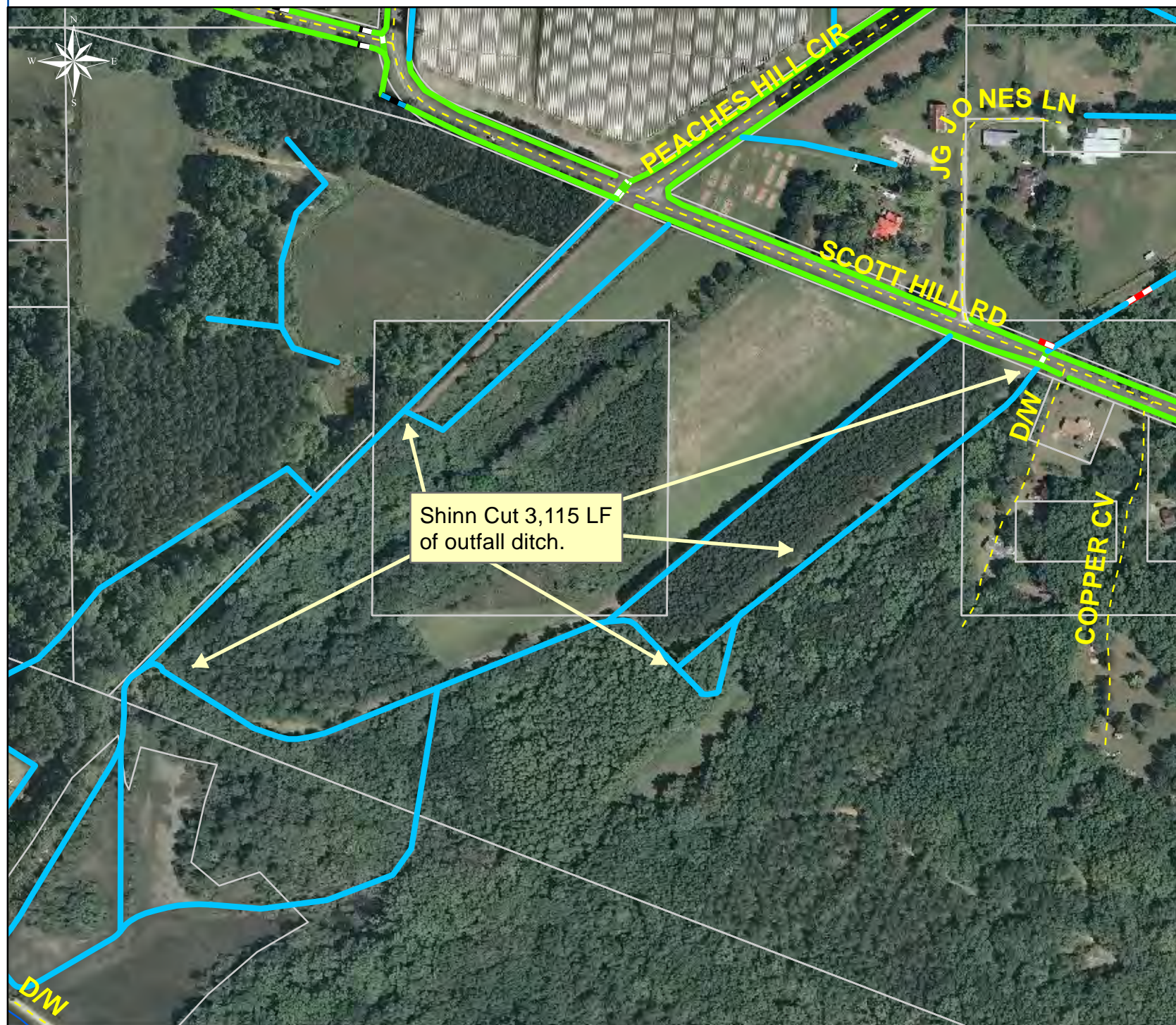
Before



During







Project: Scott Hill Road Outfall

Activity: Drainage Maintenance

Project #: 2012-315

Township: St. Helena Island

Completed: May 2012

### Legend

#### Drainage Type

- River
- Stream
- Outfall
- Lateral
- Lateral Pipe
- Roadside
- Roadside Pipe
- Crossline
- D/W
- Access
- Piped
- Bleeder
- Parcels



1 inch = 303 feet